

## Semi-structured Interview Questions

### Research study: 'Where in the world is 'Western Sydney'?"

*An examination and visualisation of regional identity, urban inequality and segregation in metropolitan Sydney in the boundaries of 'Western Sydney'*

#### Preamble introduction to participant:

Hi, my name is Jodie – a Masters student at the University of Sydney's School of Architecture, Design and Planning. I'm the Responsible Researcher for this study and will be conducting this interview.

Thank you for agreeing to participate in this interview. Please note that you can withdraw from this interview at any time, even after it's finished. If you withdraw, your responses will be removed from the research study.

For this interview, I'm going to be asking you some questions about what you think of boundaries of 'Western Sydney' when shown on a map and what makes it different from the rest of Sydney. There are no right or wrong answers. Before I ask you the questions, I'm going to provide you with a map called 'Map 1'.

**[In-person - interviewee to be provided a A3 size print out of Map 1 paper print out and provided pens to draw their own boundaries of 'Western Sydney'.**

**Online – interviewee to be emailed Map 1 before commencement of interview questioning and asked to save the image to their devices and draw their own boundary using MS Paint / equivalent application. Interviewees will be asked to send their version of 'Map 1' to the Responsible Researcher (Jodie Vo) via [jovo3537@uni.sydney.edu.au](mailto:jovo3537@uni.sydney.edu.au) on the same day of the interview.]**

This map is for you to look at and think the about key question "where is 'Western Sydney?'".

You can draw lines, arrows, images, write comments or mark anything on Map 1 to show where you think 'Western Sydney' starts and ends. You can draw on Map 1 at any time before the end of the interview - I'll let you know when we're reaching the end). You can make as many changes as you like.

Okay, I'm going to start asking you the interview questions now.

#### Opening questions (to be asked in sequenced order)

1. In whatever way you like, tell me a little bit about yourself and where in Sydney you live.
2. What are the first four words that come to your mind when you hear or read 'Western Sydney'?

#### Middle questions (to be asked in random order)

1. What are your perceptions or associations of 'Western Sydney' today?
2. What do you think makes 'Western Sydney' as a distinct part of Sydney?
3. How has your view of 'Western Sydney' changed over time?

#### Ending questions (to be asked in sequenced order)

1. How would you show where 'Western Sydney' starts and ends today on Map 1? Talk me through your process.
2. Now look at Map 2 – this map is the same as Map 1 but it shows a satellite view of the land and patterns of urban settlement. After seeing Map 2, affect anything about how you have shown 'Western Sydney' in Map 1?

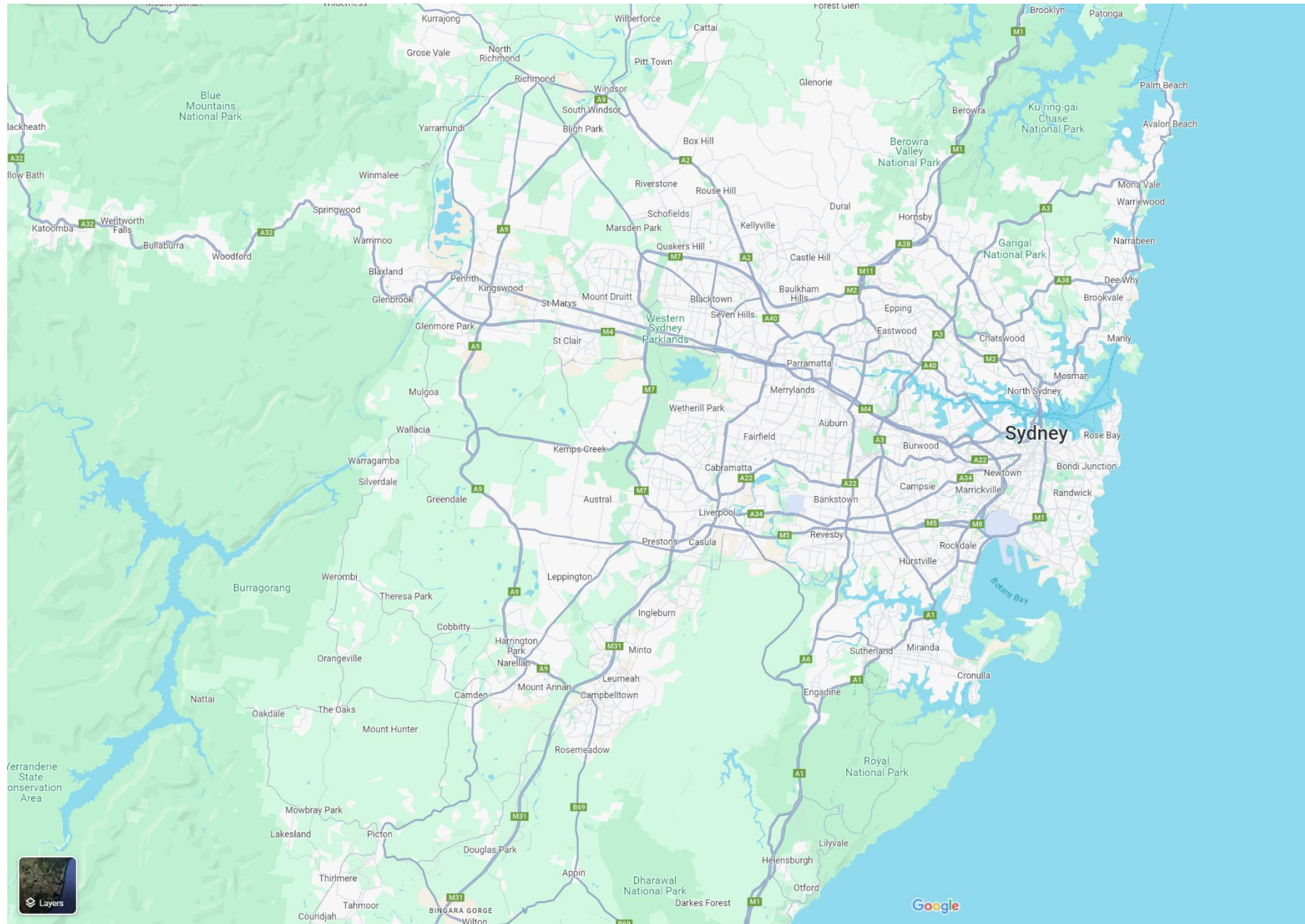
This is the end of the interview, thanks for participating and your inputs.

You can contact me at any time if you had any questions or concerns about the study or your interview responses. My contact details are in the 'Participant Information Statement' that I gave to you before this interview.



Source: Google Maps 2019, Google Maps, Google Maps, viewed 24 September 2024, <https://www.google.com.au/maps/@-33.8795999>.

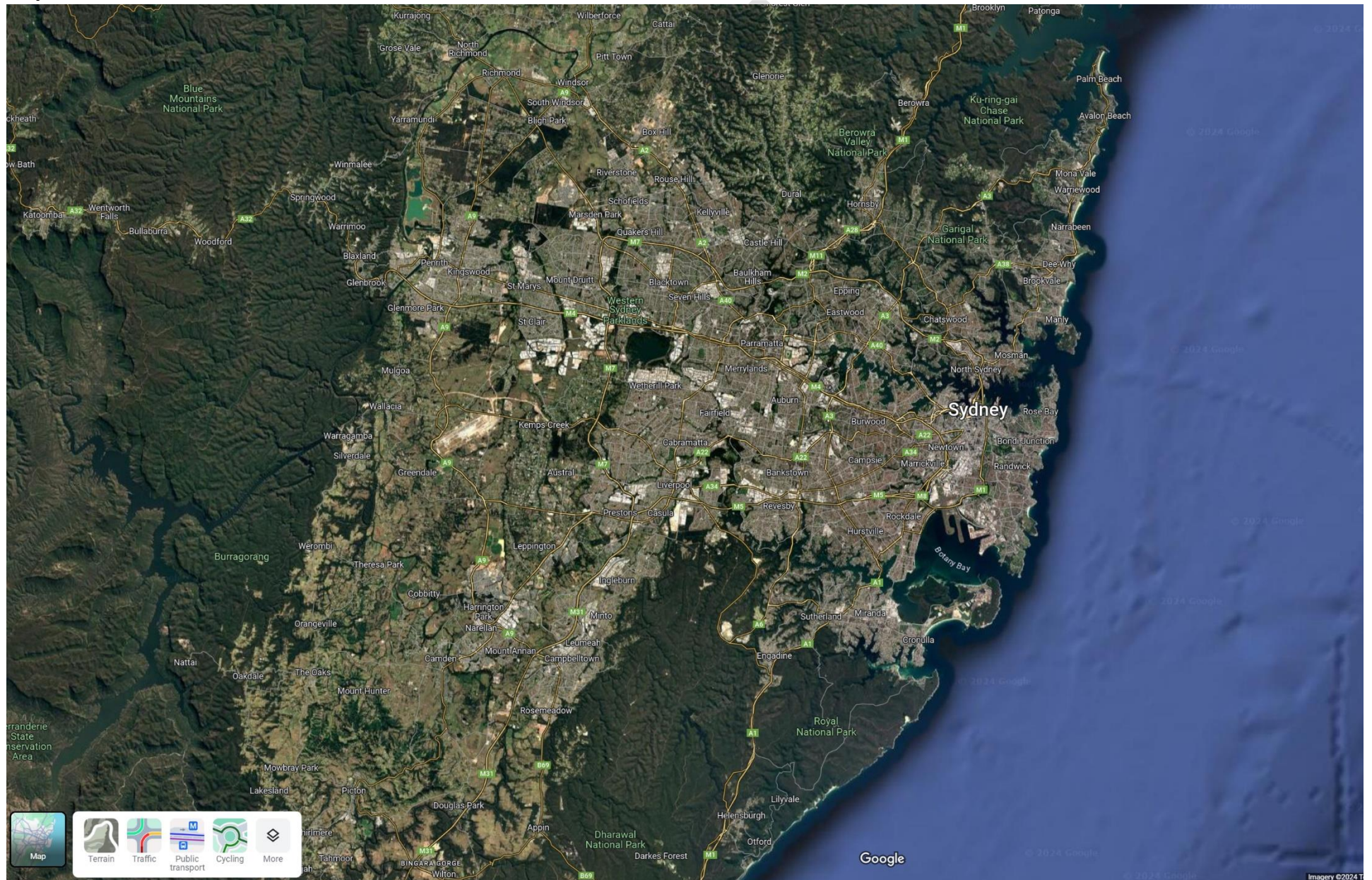
Map 1





Source: Google Maps 2019, Google Maps, Google Maps, viewed 24 September 2024, <https://www.google.com.au/maps/@-33.8795999>.

Map 2







THE UNIVERSITY OF  
SYDNEY

Map 1

Source: Google Maps 2019. Google Maps, Google Maps, viewed 24 September 2024, <https://www.google.com.au/maps/@-33.8795999>.





Source: Google Maps 2019, Google Maps, Google Maps, viewed 24 September 2024, <https://www.google.com.au/maps/@-33.8795999>.

Map 1



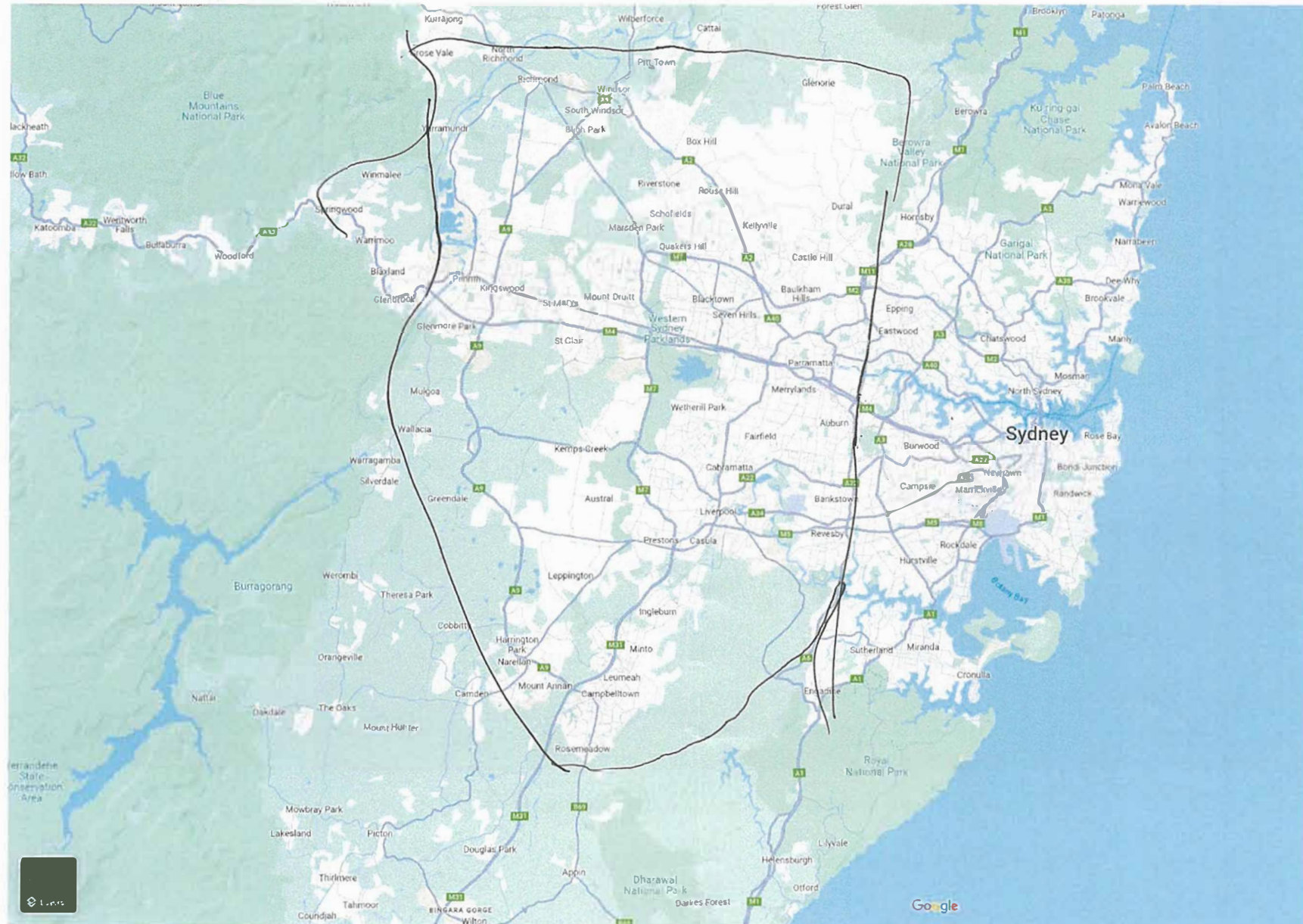




THE UNIVERSITY OF  
SYDNEY

Map 1

Source: Google Maps 2019, Google Maps, Google Maps, viewed 24 September 2024, <https://www.google.com.au/maps/@-33.8795999>,







THE UNIVERSITY OF  
SYDNEY

Map 1

Source: Google Maps 2019. Google Maps, Google Maps, viewed 24 September 2024, <https://www.google.com.au/maps/@-33.8795999>.







THE UNIVERSITY OF  
SYDNEY

Interview 8.

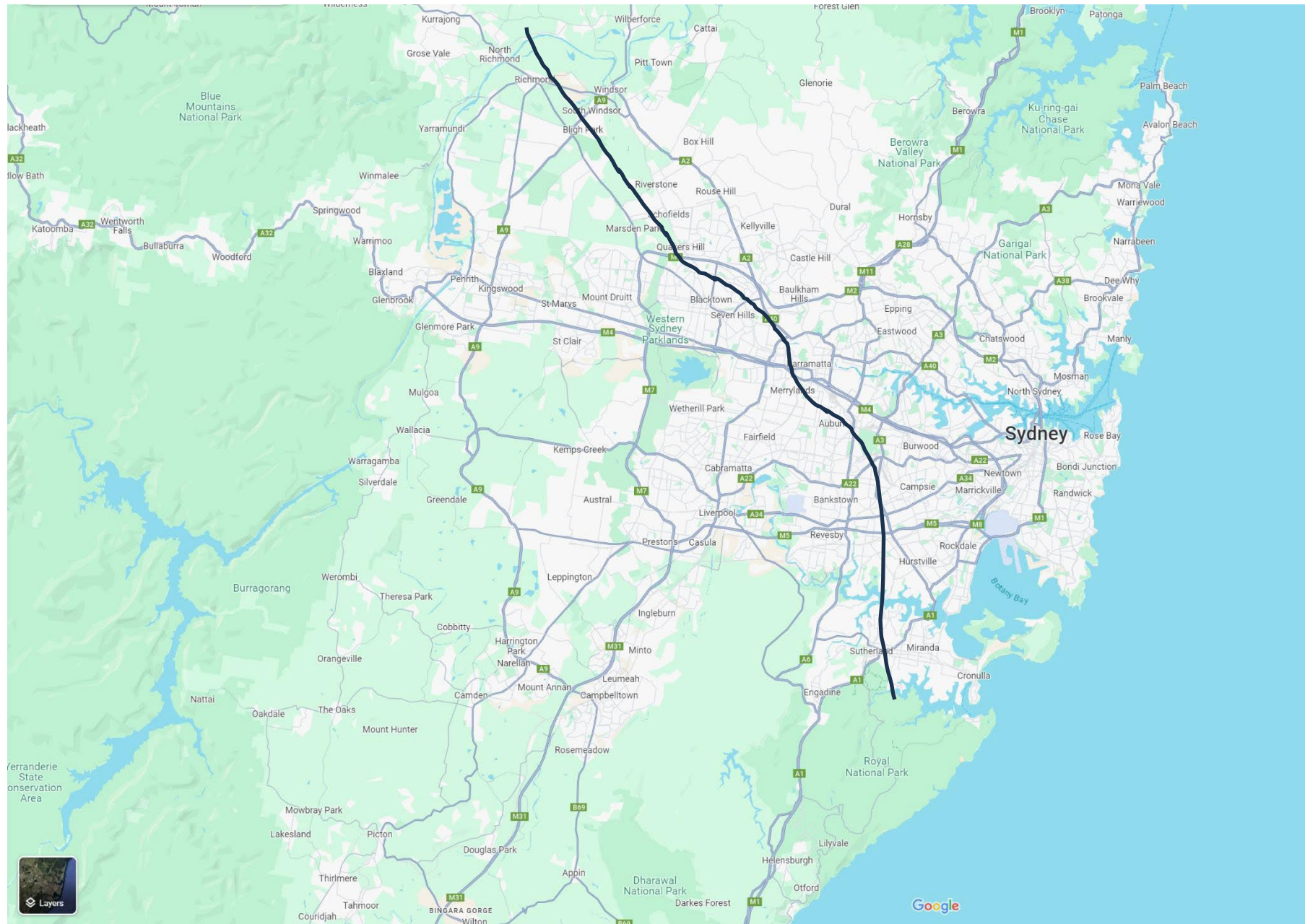
Map 1

Source: Google Maps 2019, Google Maps, Google Maps, viewed 24 September 2024, <https://www.google.com.au/maps/@-33.8795999>.





### Map 1

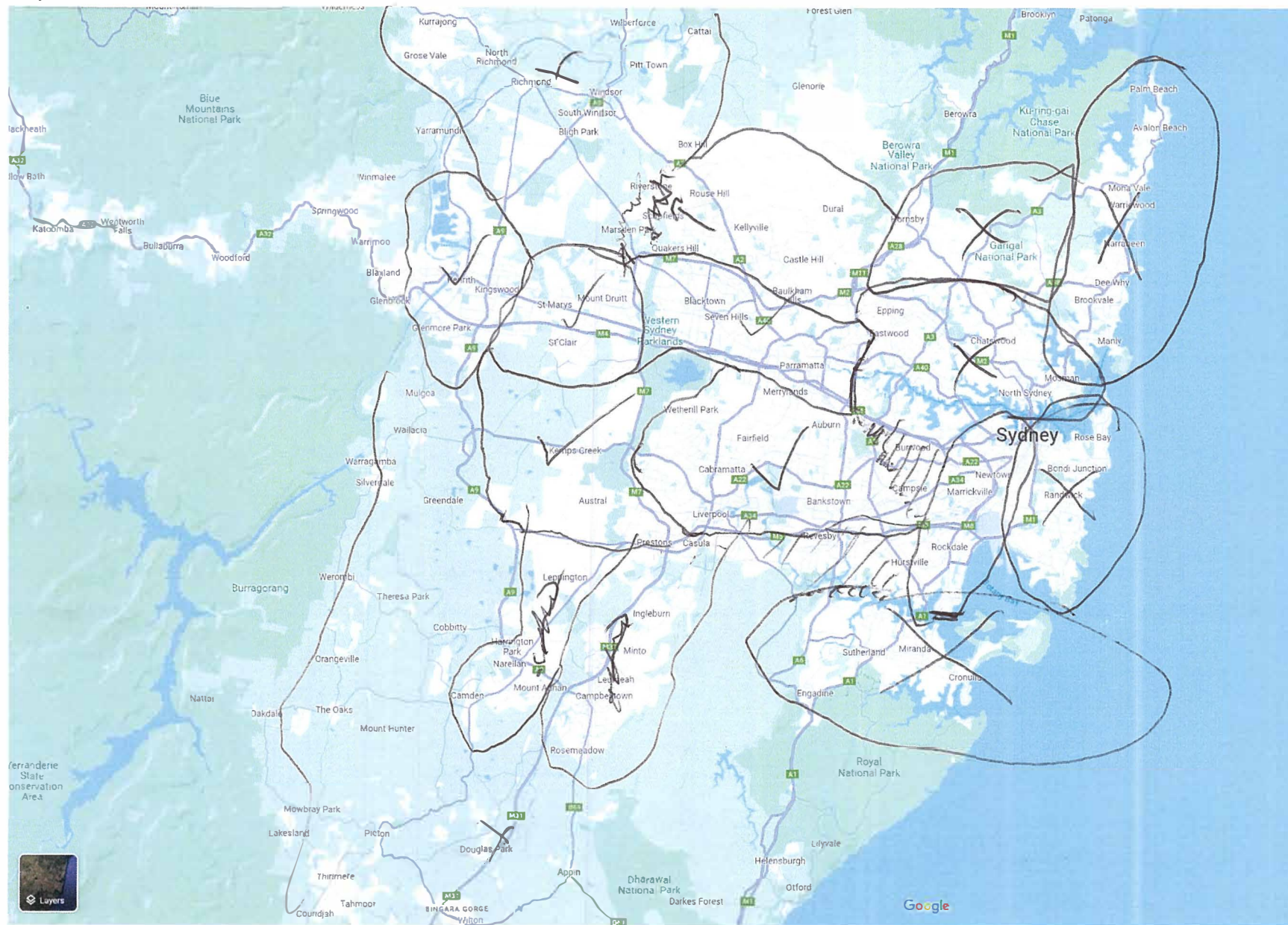






Map 1

Source: Google Maps 2019, Google Maps, Google Maps, viewed 24 September 2024, <https://www.google.com.au/maps/@-33.8795999>.



*[Handwritten signature]*



